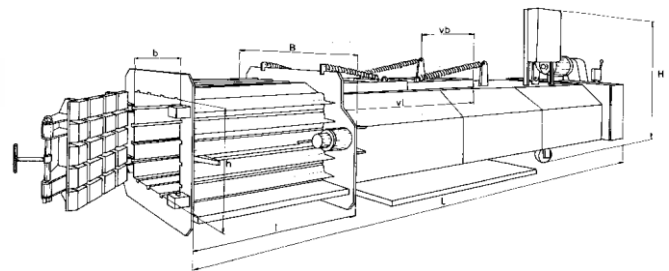
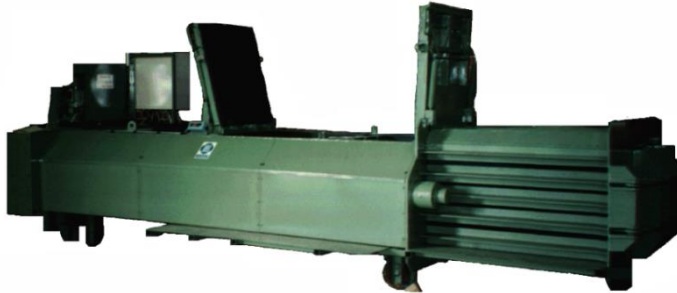




**BOLLEGRAAF SA30**  
**BALING PRESS**



**SUMMARY SPECIFICATION**

DETAILS	SA30		SA30wf	
	IMPERIAL	METRIC	IMPERIAL	METRIC
Baler length (l)	21'	6400 mm	21'	6400 mm
Baler width (b)	5'4"	1620 mm	6'4"	1920 mm
Baler height (h)	7'4"	2240 mm	7'4"	2240 mm
Charge height	3'11"	1200 mm	3'11"	1200 mm
Charge opening length (vl)	6'7"	2010 mm	6'7"	2010 mm
Charge opening width (vb)	2'11"	900 mm	3'11"	1200 mm
Motor kw/HP	25 hp	18.5 kW	40HP	30 kW
Press ram speed	19'8" Ft/min	6 m/min	29'6" Ft/min	9 m/min
Pressure exerted	30 Ton	300 kN	30 Ton	300 kN
Max. Bale length (l)	4'7"	1400 mm	4'7"	1400 mm
Max. Bale width (b)	2'11"	900 mm	3'11"	1200 mm
Max. Bale height (h)	2'8"	800 mm	2'8"	800 mm
Max. Bale weight (approx.)	1213 lbs	550 kg	1433 lbs	650 kg
Capacity/hour (approx.)	5512 lbs	2500 kg	5732 lbs	2600 Kg
No of wires vertical		3		4
No of wires horizontal		4		4

MEASUREMENTS MAY VARY DUE TO MANUFACTURER'S POLICY OF IMPROVEMENT  
Images are representative of equipment and not necessarily of the actual item available