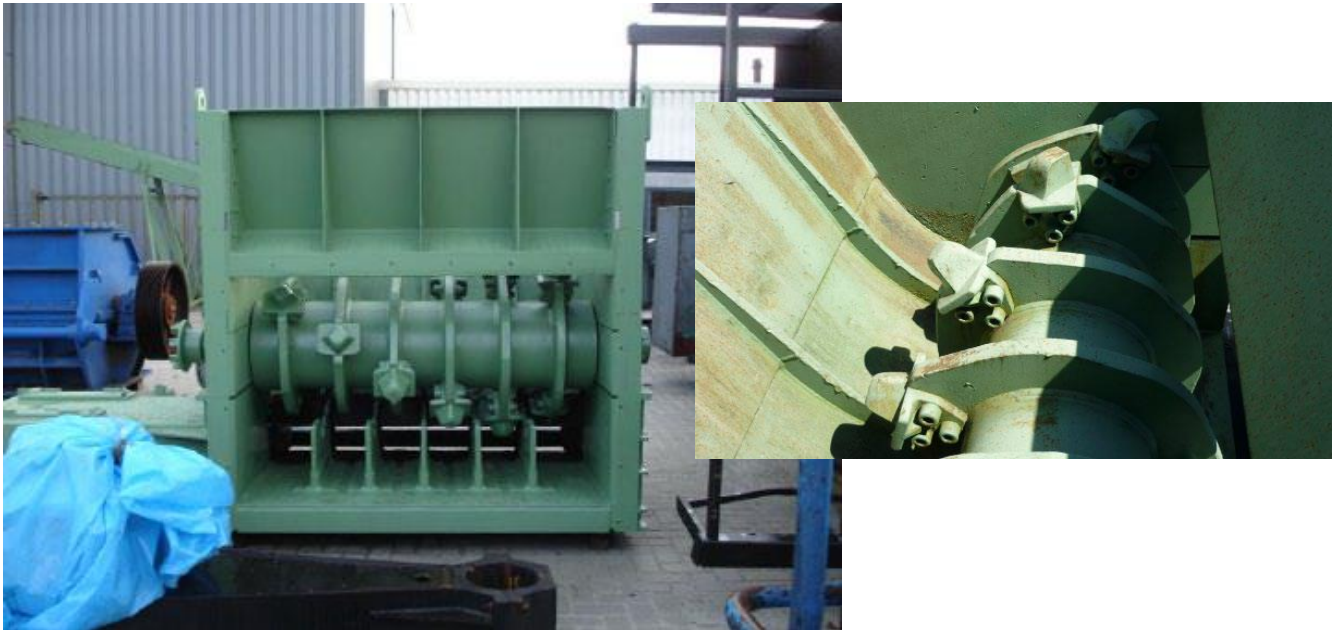




BOA RINO 750/160
HOGGER



SUMMARY SPECIFICATION

DETAILS	IMPERIAL	METRIC
Machine width	10'10"	3310 mm
Machine height	13'	3960 mm
Machine length	8'	2440 mm
Machine weight	Approx. 6 Tons	Approx. 6 Tonnes
Power requirements	3 Phase	125 amps 415V
Rotor width	5'1"	1525 mm
Shredder motor size	75 hp	55 kW
Feed method	Conveyor	
Capacity (approximate)	20 Ton/Hour	20000 kg/Hour
Shredding method	Hammer Action	

MEASUREMENTS MAY VARY DUE TO MANUFACTURER'S POLICY OF IMPROVEMENT
Images are representative of equipment and not necessarily of the actual item available